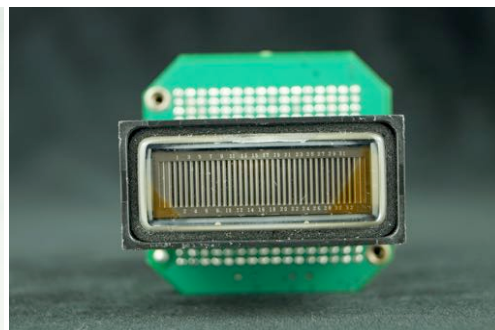
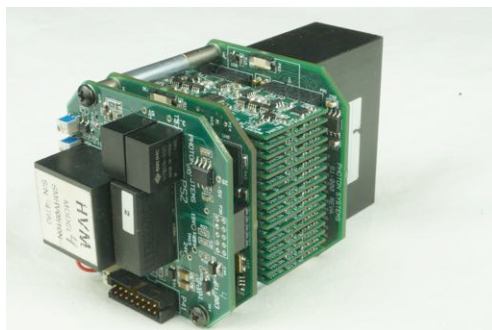
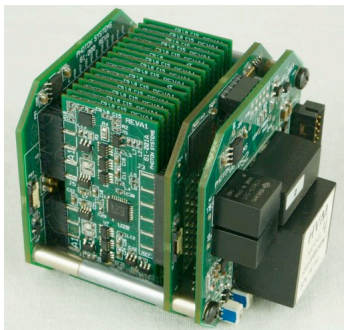


32 Channel Digital Gated Boxcar Integrator and Averager



Direct interface to Photon Systems Deep UV laser

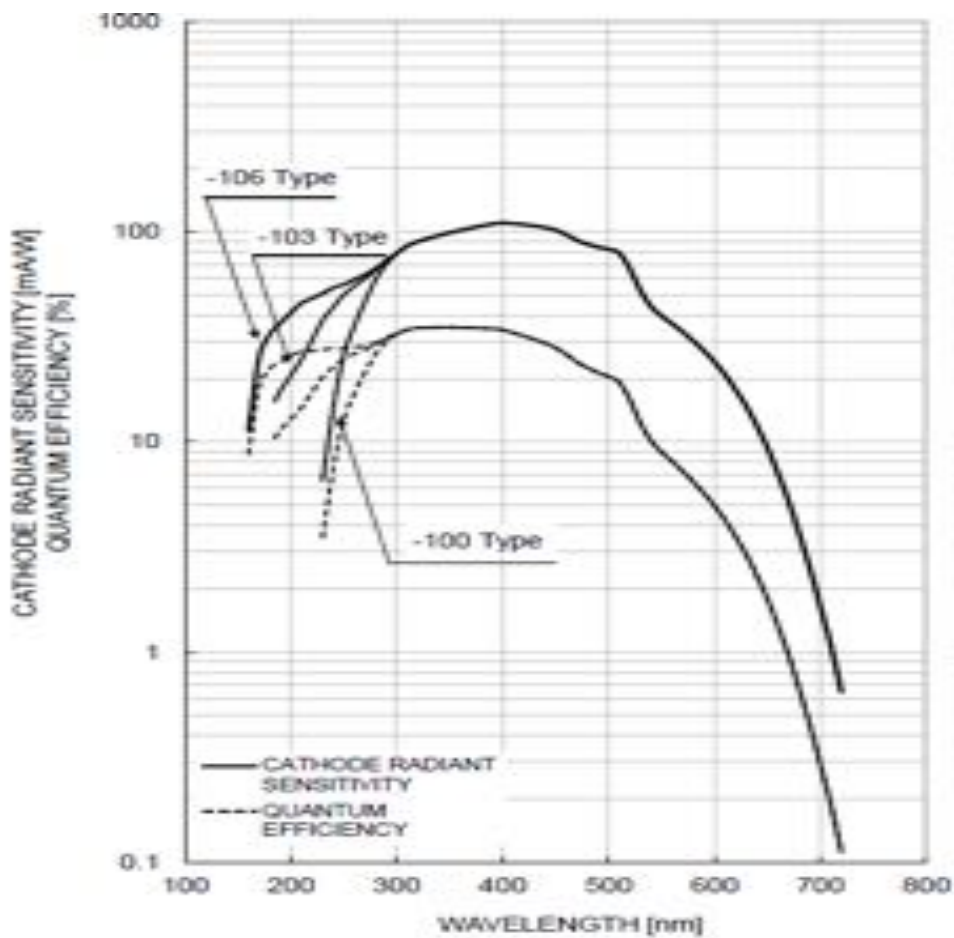
Applications:

- ✓ **Direct laser induced resonance fluorescence and/or Raman analyzer for:**
 - Targeted chemical sensing
 - Explosives Detection
 - Surface contamination profiling
 - Municipal and Industrial waste water contamination
 - Soil contamination profiling
 - Aerosol detection
- ✓ **Laser Induced Native Fluorescence (LINF)**
 - CE
 - HPLC
- ✓ **Direct laser induced PhotoLuminescence probe for:**
 - Wide Band Gap Semiconductors
- ✓ **Any Other Applications Using Pulsed Sources such as OBIC**

Features:

- **PMT Array Controller for Hamamatsu 32 Channel PMT Array Module, H7260**
- **Directly interfaces with PSI 224nm or 248nm deep UV lasers for excitation and detection of fluorescence or Raman scattering in multiple wavebands**
- **Over 1000X better signal to noise than CW detection**
- **Digital PMT gain control, 4 decades, to 4×10^6 total gain.**
- **2 switchable integration capacitors with on-board self-test circuit to measure integration capacitance**
- **Over 6 decades of dynamic range, starting at close to single photon**
- **Dual Serial port, RS488 Full Duplex**
- **32Bit, 75Mips Processor with 256K RAM and 256K Flash**
- **24 Bit Delta-Sigma Data Converter, 16bit data resolution**
- **On board temperature sensor**
- **On board system offset voltage controller**
- **Fully adjustable start/finish integration parameters, 2 μ s to multiple seconds**
- **LabView or equivalent controllable**





Hamamatsu H7260 Performance

